



June 2020

BCBA
P.O. Box10371
Green Bay, WI 54307-
0371

New Facebook
Interactive Group

Northeast WI
Beekeepers

Join today!



**Join us
for a Virtual
Coffee & Bee
Chat Tuesday
6/2/2020 8AM
Via ZOOM MEETING
Details Below**

Varroa Mite Monitoring
Resource

[https://pollinators.msu.edu/
resources/beekeepers/varroa-mite-
monitoring1/varroa-mite-
monitoring/](https://pollinators.msu.edu/resources/beekeepers/varroa-mite-monitoring1/varroa-mite-monitoring/)

Brown County Beekeepers Association Newsletter

www.browncountybeekeepers.com

BCBA Mission Statement: We are dedicated to promoting sustainable, responsible, and healthy beekeeping practices in Northeast Wisconsin for both experienced and first-time beekeepers. We strive to create a fun environment where learning opportunities exist for association members and the general public.

**The club will continue to hold our meeting via
ZOOM until further notice.**
GB Botanical Gardens are open again/ gatherings of 10 or less.



Swarm Cells

June

Colonies are working hard and expanding rapidly.
Swarm season is upon us.

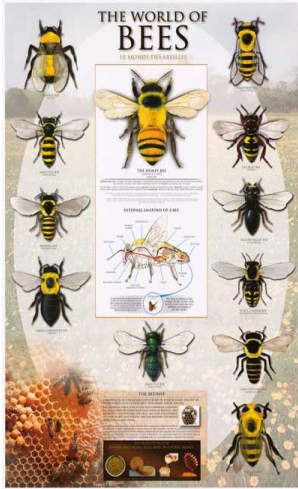
It is important to make sure your bees have enough room in the hives.
No room = Swarming



Check out this swarm

The Brown County Beekeepers
Association has experienced
swarm catchers listed on our
website
<https://browncountybeekeepers.com>

2020 Club Calendar



Date	Topic
June 17 Virtual ZOOM meeting	Hive Inspection: Taking a deep dive into what it is we are seeing and what we should be looking for in managing a healthy hive including recommended interventions. Submit burning questions to secretary@browncountybeekeepers.com by June 10 to help us prepare ahead
June 24	Education - Virtual Hive Inspection 5:30
July	No Meeting <u>July BCBA Picnic 2020 Cancelled due to Pandemic</u>
August 19	Honey Extraction – MB4M Open Topic
September 16	Prep Bees for Winter – Capitol Bees
October 21	Master Beekeeper
November 18	Raising Queens
December 17	Christmas Party?

Bee Bearding Activity



Bees bearding, hanging out on the front of the hive, is normal during the summer months. This happens when the hives have increased their colony size to take advantage of the nectar flows in the spring and summer.

You may see this activity during hot weather and on rainy days. When the population is high, many of the foragers are out for extended periods, even overnight. Rain brings them all back to the hive at the same time and things get crowded. The bees are working to maintain the constant temperature of the brood nest and moving outside helps to decrease overheating.

When they are bearding, if you look closely, you may notice some of the bees on the outside fanning to allow circulation of airflow into the hive.

BCBA Leadership

President: Dave Elsen
president@browncountybeekeepers.com

Vice President:
Julie Mazzoleni
vicepresident@browncountybeekeepers.com

Secretary:
Sarah Mueller
secretary@browncountybeekeepers.com

Treasurer:
Tom Cashman
TGCash99930@aol.com

Social Media Chair:
Carl Fisher
Carlfisher22@gmail.com

Membership Chair:
OPEN

Education Chair:
OPEN

Virtual Meeting Links for June

- **June 2nd Virtual Coffee and Bee Talk - 8am**

Time: 08:00 AM Central Time

Join Zoom Meeting

<https://us02web.zoom.us/j/81639124111?pwd=cHFSQ3FibjZtN09RVlJvVmllNlgyQT09>

Meeting ID: 816 3912 4111

Password: 239095

- **June 17th Virtual BCBA May Meeting 6:30pm**
A Deeper Dive into the Hive

Time: 6:30 PM

Will open up early @ 6pm so everyone can get in and set up

Join Zoom Meeting

<https://us02web.zoom.us/j/87498996504?pwd=V2xGWXRQd3E1MDV4V1pyVVRMQ0prQT09>

Meeting ID: 874 9899 6504

Password: 241543

- **June 24th Virtual BCBA Hive Inspection**

Time: 5:30 PM

Join Zoom Meeting

<https://us02web.zoom.us/j/86720226434?pwd=dC9lRzFwOGxJSXNQTVllUkFDckdLdz09>

Meeting ID: 867 2022 6434

Password: 105319

Consider getting involved in the Club with a supporting role on the Leadership Team

We continue to look for a couple of fellow BEEKS to partner with the BCBA leadership team to enhance the club by collaborating in coordinating educational opportunities and supporting membership. Take a seat at the table and have a voice in ideas to create engagement within the club. This is a great way to build your beekeeping network and get involved.

Needed

Education Chair AND Membership Chair. **Contact Dave Elsen**

Free Education Opportunity



Capital Bee Supply

Check out the link below for some **FREE** e-learning topics by
<https://www.facebook.com/CapitalBeeSupply/posts/2890729754299781>

September 16 club presenter



American Bee Journal

Discount for club members

GREAT PUBLICATION

GET INFO FROM TOM CASHMAN

BCBA Equipment Rental

<https://browncountybeekeepers.com/members/equipment/>

Honey Extractor and Equipment
Infrared Camera

Education Reimbursement Opportunity

Club members are eligible for up to \$25/ calendar year for continuing education

Eligibility Guidelines:

- Must be a current member for at least 12 consecutive months
- Member must submit their request to the Leadership Team prior to the event including details on how it aligns to the Club's Mission

Note: BCBA sponsored events, books or magazines not eligible for reimbursements

Club Expectations of Members Receiving Education Reimbursement

- Overview of the education to the club or an education session
- Write-up with photos and/or video for club publication

Events in the Works

Cooking with Honey



Honey Extraction Event



WHAT IS GOING ON IN THE WORLD OF BEES IN JUNE:

In the hive

June and July are the months of maximum population in the colony. Depending on your area and management style, the population will vary. Most estimates are in the range of 40-60,000 but some go up to seven digits.

The colony, if big enough, continues to rear drones. Swarm season also continues in June.

The *Varroa* mite population continues to build.

Seasonal conditions

In Green Bay Wisconsin, in June, the average minimum and maximum temperatures are 54.1°F and 75.4°F, with 3.9" of precipitation. The longest day of the year is June 21. The earliest sunrise, however, is on June 13, at 5:28am, and the latest sunset is on June 28 at 8:48pm.

Lots of blooms continue: deadnettle, black locust, tulip poplar, hawthorn, autumn olive, willow, dandelion, oak, apple, cherry, plum, honeysuckle, pear, elderberry, blueberries, raspberries, blackberries, and the earlier clovers- plus white sweetclover (*Melilotus alba*) and yellow sweetclover (*Melilotus officinalis*). Basswood/linden (*Tilia* spp.) may bloom by the end of the month. The European species, littleleaf linden, can usually be found in parks and urban areas. It blooms slightly earlier than the American basswood (July), which is generally found in the wild. Other blooms include catalpa trees (*Catalpa speciosa*), milkweed (*Asclepias* spp.), yellow rocket (*Barbarea* spp.), birdsfoot trefoil (*Lotus corniculatus*), hairy and purple vetch (*Vicia villosa*, *Vicia americana*), chicory (*Cichorium*

intybus), grape (*Vitis* spp.), and sumac (*Rhus* spp.). These also include invasives such as purple loosestrife (*Lythrum salicaria*), knapweed (*Centaurea* spp.), and Russian olive (*Elaeagnus angustifolia*). Alfalfa (*Medicago sativa*) may also be in bloom, although it is generally cut for hay before it flowers.

Beekeeping Activities Inspection

- Colony inspections should take place at least once a month and include evaluating the brood pattern, confirming the presence of the queen and/or eggs, evaluating colony growth and available room, monitoring for pests and diseases, and other metrics.
- If you cannot inspect every one of your colonies, inspect the colonies that are not showing as much activity on the outside.
- If you install a package or nuc, allow two weeks for the colony to establish before you inspect it.

Nutrition

- Feed package bees or nucs upon their arrival.
- Provide supers if the brood chambers are full and the population/stores growing.

Pests, parasites, and diseases

- Monitor *Varroa* mite levels using sugar shake/roll or alcohol wash.
- At this point in the year, if you find two or more mites /100 bees, you will want to treat.
- Treatment methods will depend on your management goals, the condition of the colony, and external conditions.
- Drone comb can be an effective cultural method at this time of year. T

- This may be a good time to break the brood cycle (and therefore the *Varroa* reproduction cycle) by caging the queen or performing splits.

Population management

- Swarm control: see the guidelines for May.
- This is the best time (swarm season) to rear queens.

Equipment

- Foundation will be more likely to be drawn out during a honey flow.
- Consider adding a queen excluder to manage the honey supers more easily.
- Set up bait hives if you want to catch a swarm!

Hive products and services

- Depending on the strength/size of your colonies and your management goals, you may consider extracting the spring honey. Extract immediately after removing the supers to prevent a small hive beetle infestation.
- You may be able to trap pollen.
- Blueberries and cranberries are commercially pollinated this month in the Northeast.

Yard maintenance

- Mow the yard as necessary.

Education and outreach

- National Pollinator Week is in June; check your local club or extension office for events.

Adapted from the Cornell University
Beekeeping Calendar 2020